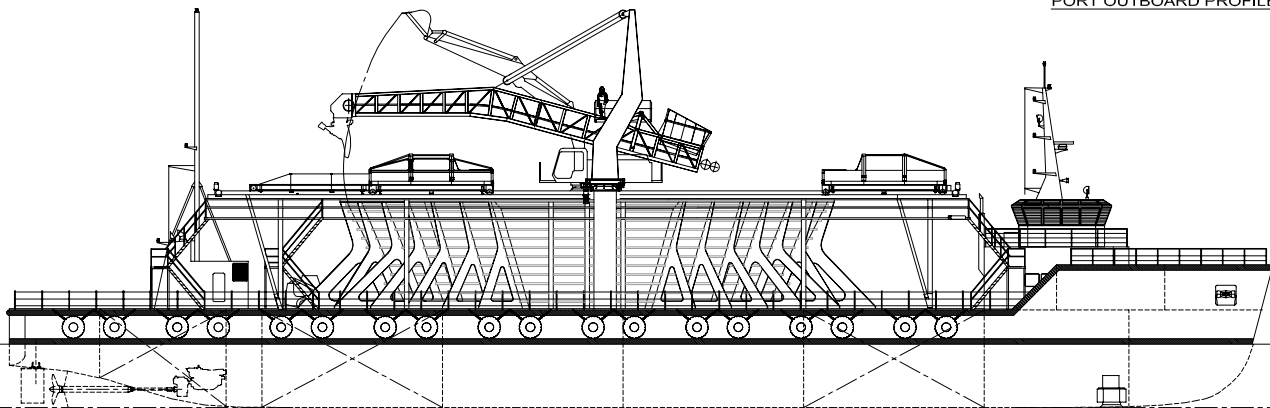
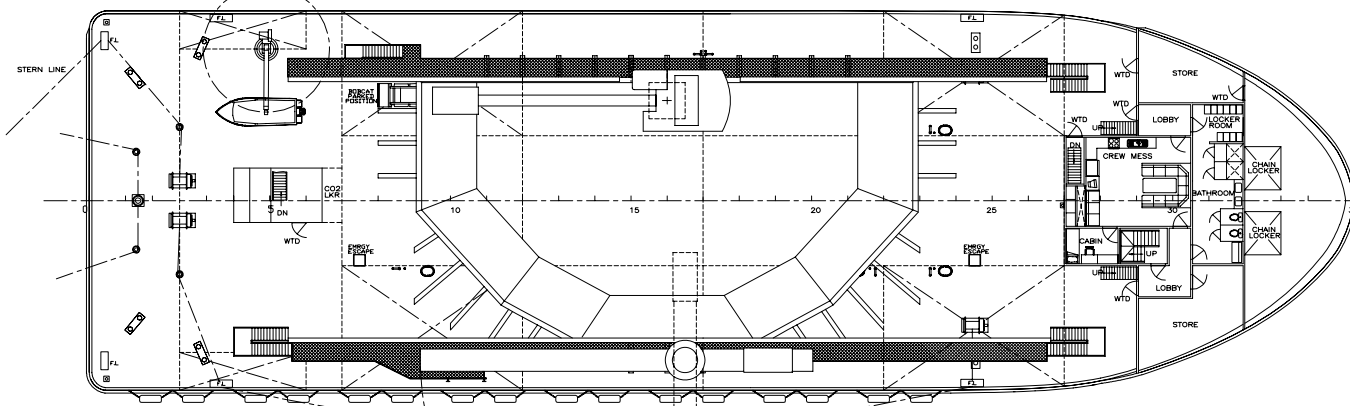
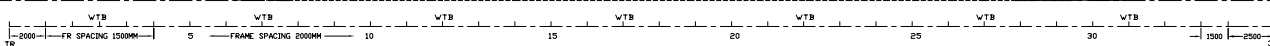


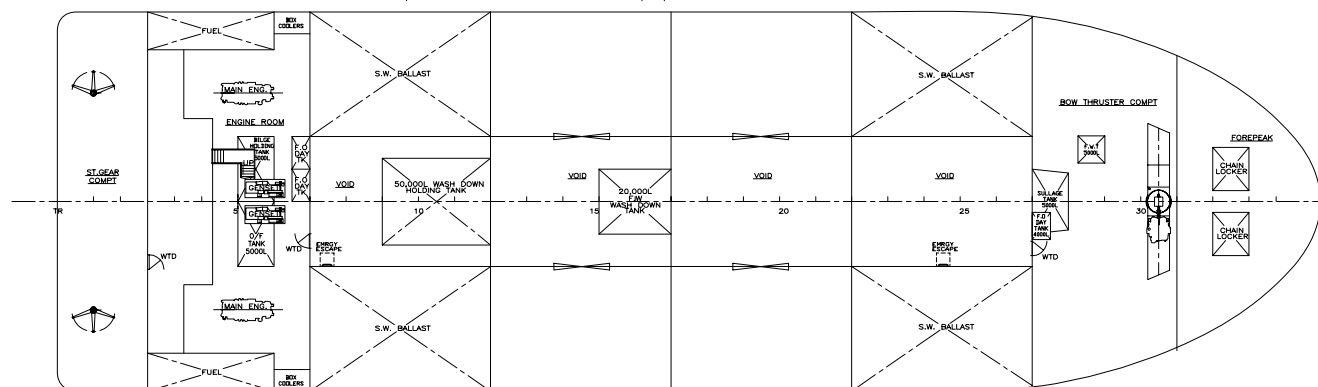
PORT OUTBOARD PROFILE



STARBOARD PROFILE

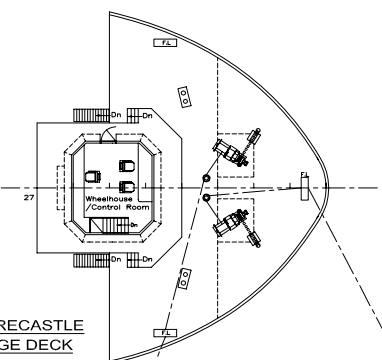


PLAN ON MAIN DECK



PLAN BELOW DECK

PRINCIPAL PARTICULARS	
LENGTH OVERALL	70.0 M
BREADTH (MLD)	21.0 M
DEPTH (MLD)	5.4 M
DRAFT (SUMMER)	4.0 M
CARGO DEADWEIGHT	3000 TONNES
PROPULSION POWER	2 x 595 kW
SERVICE SPEED	8 KNOTS (approx)
CLASSIFICATION	ABS



PLAN ON FORECASTLE / BRIDGE DECK

CLASSIFICATION : ABS #A1 #AMS ORE TRANSFER VESSEL
COASTAL SERVICE
V.I.D : 137 621

CNA
COMMERCIAL NAVAL ARCHITECTS
COMMERCIAL NAVAL ARCHITECTS PTY LTD ADN 103 573 137

P.O. BOX 666 MASTHEAD WAY
SANCTUARY COVE QLD 4212
AUSTRALIA
TEL: (07) 5577 9899
FAX: (07) 5577 8955
WWW.NAVALARCHITECT.COM.AU

PROJECT	3000 TONNE DWT ORE TRANSFER VESSEL		
TITLE	GENERAL ARRANGEMENT		
© COPYRIGHT - ALL RIGHTS RESERVED			
DATE	5/09/02	DRAWN	AR
SCALE	1:150	DRG No.	852-G1
PAPER SIZE	A1		

REV DATE	DESCRIPTION	DRAWN
0 24/02/03	DRAWING ISSUED FOR ABS APPROVAL	
1 15/04/03	REVISED DECK EQUIP, BHDS, MAST & LIGHTS	AR
2 11/09/03	CARGO BIN MIRRORRED, NEW ACCOM. ARRGT	AR

COMMERCIAL NAVAL ARCHITECTS PTY LTD/02803 A03 P1852-01 General Arrangement Approved 02/09/04