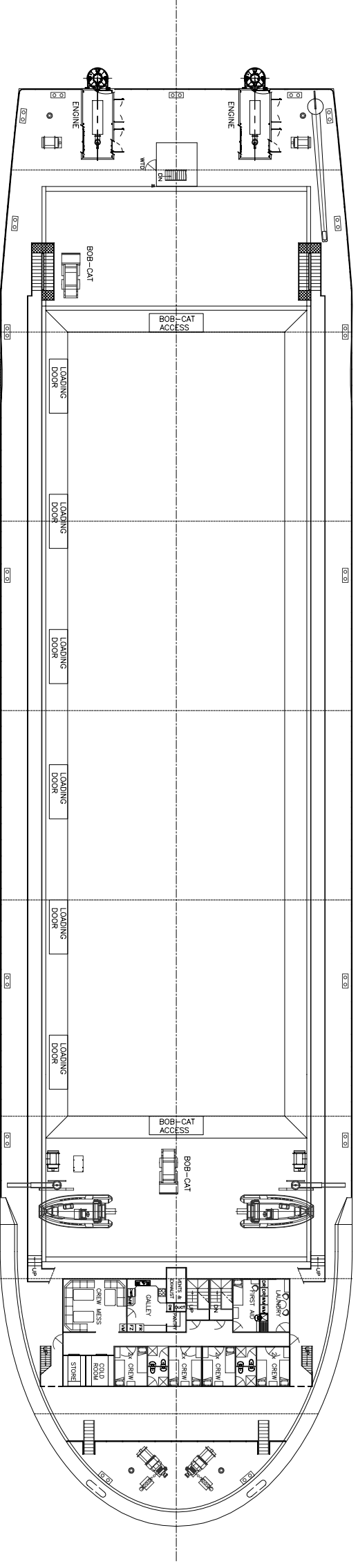
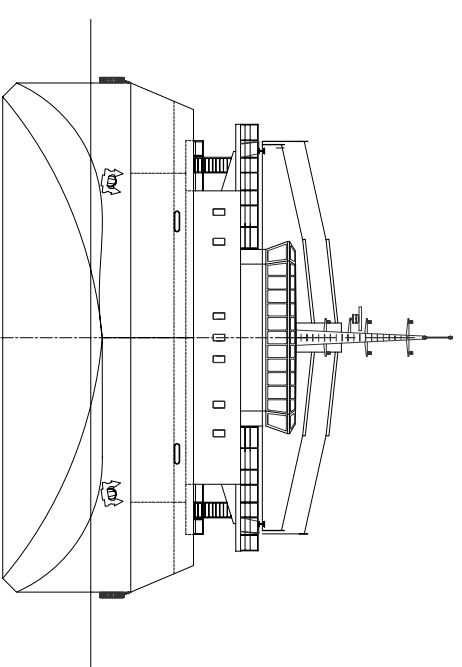
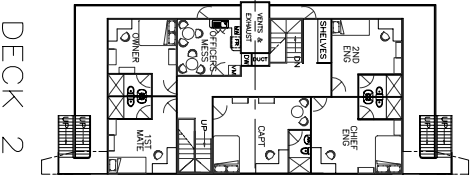


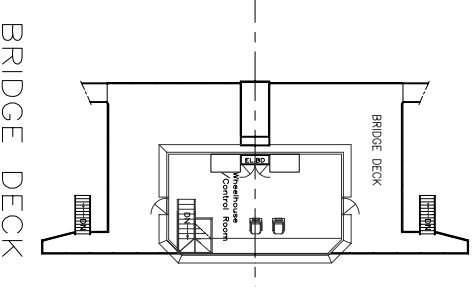
STARBOARD PROFILE



MAIN DECK PLAN:



DECK 2

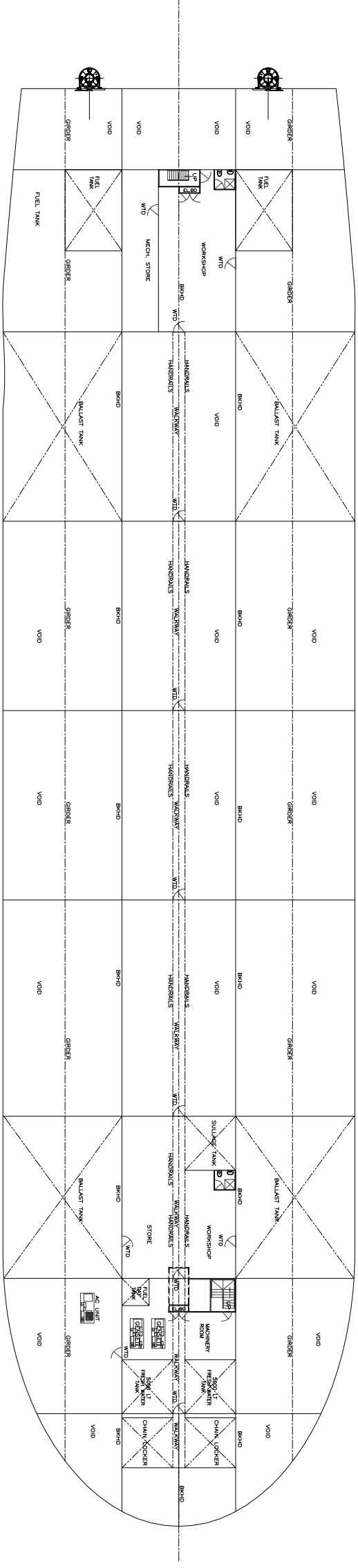


BRIDGE DECK 1

- LEGEND
- DN = DOWN
 - DR = DRYER
 - DWR = DISH WASHER
 - FR = FRIDGE
 - FZ = FREEZER
 - MW = MICROWAVE
 - VM = VENDING MACHINE
 - WM = WASHING MACHINE

PRINCIPAL PARTICULARS:

LENGTH (OVERALL)	106.3 METRES
LENGTH (WL)	105.59 METRES
BEAM (MID)	26.0 METRES
DEPTH (MID)	6.54 METRES
DESIGN DRAFT	4.50 METRES
CARGO CAPACITY	8000 TONNES
SERVICE SPEED	9 KNOTS



BELOW DECK PLAN:

REV DATE	DESCRIPTION	DRAWN
02 20.05.05	PROVISIONAL ISSUE FOR CLIENT COMMENT	
03 27.05.05	REVISED ACCESS TO DECK 2	

CNA
COMMERCIAL NAVAL ARCHITECTS
 COMMERCIAL NAVAL ARCHITECTS PTY LTD. ACN 103 573 137
 P.O. BOX 666 MASTHEAD WAY
 5 ALBERTA AVE
 TEL (07) 5577 8895
 WWW.NAVARCHITECT.COM.AU

PROJECT: PROJ. 990 - COAL BARGE 8000 DWT

TITLE: GENERAL ARRANGEMENT

DATE: 18.05.05

SCALE: 1:200

DWG No: -

PAPER SIZE: A1